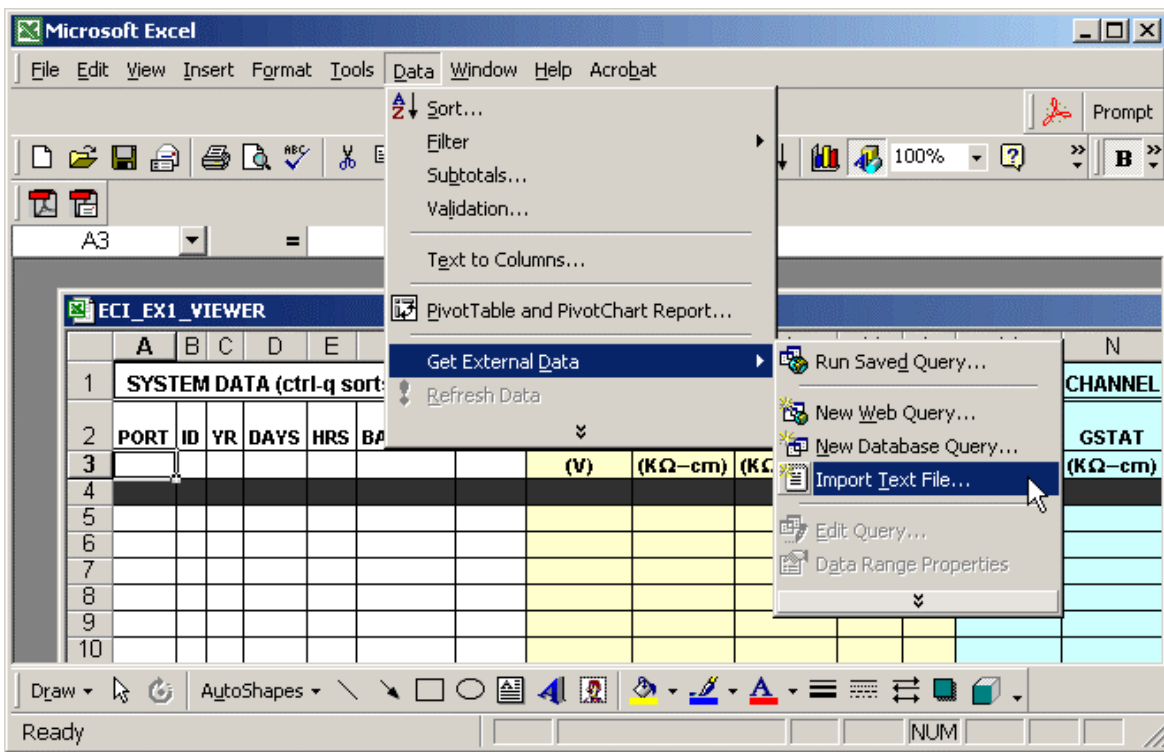


April 2, 2004

### ECI\_EX1\_VIEWER.XLS HELP FILE

The template was created to display the data file created by the ECI\_EX1.CSI code examples presented in application note #ECI\_100. When loading the file, you will be asked if you want to “Enable Macros?”. Select YES. To collect data into the spreadsheet:

- 1) Click in column A where you want to insert the data.
- 2) Click “Data”, then “Get External Data” then “Import Text File”. In the dialog window that opens, you can select only text files (\*.txt). Click in the filename area and type \*.dat, and all the .DAT files will show up. Locate your \*.DAT file and click IMPORT.



3) You now will see a “TEXT IMPORT WIZARD” STEP #1. “Delimited” is selected already, so click NEXT. Click the box next to COMMA to place a checkmark in it. The example window underneath will update. Click “FINISH” now to complete the process. You are then asked where you want to place the data. Since you already selected the location, simply click FINISH.

4) The widths of the columns will change when you import data. The MACRO will fix the column widths and sort all the data based on: LOGGER ID (serial number); then PORT; then DAY. To run the macro press “CTRL+Q” (Control and “Q” at the same time).